



Cabin in brush in 2007 at time of donation, front view. (2007-05-02, IMG 0930)



Cabin in brush in 2007 at time of donation, rear view. (2007-03-15, IMG 0348)



Close-up of deterioration in 2007. (2007-03-15, IMG 0352)



Initial bracing of cabin in 2007. (2007-07-11, IMG 1215)



Documenting the cabin. (2007-03-23, IMG 0721)



Gating access road for security. (2007-05-02, IMG 0928)



Preservation Architect Emeritus Herschel Shepard studies cabin and architectural drawings. (2008-08-27, IMG 2063)



Herschel Shepard discusses restoration options with State Historic preservation Officials. (2008-08-27, IMG 0296)



Architect Herschel Shepard and Restoration Craftsman and Builder Jeff Penuel discuss restoration protocol. (2008-08-11, IMG 2122)



Umatilla Historical Society board members discuss restoration plans with Herschel Shepard. (2009-01-22, IMG 2444)



Jeff Penuel and Herschel Shepard discuss methods for “righting” the chimney. (2009-05-13, IMG 3255)



Careful dismantling of deteriorated portions of the cabin. (2009-10-29, IMG 3888)



Salvageable material is set aside for later use. (2009-10-29, IMG 3915)



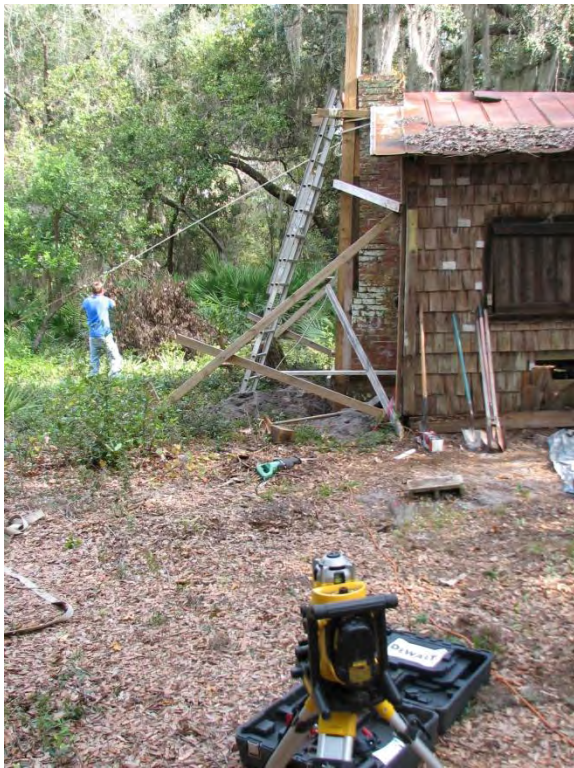
Rodent debris under cabin floor being removed. (2009-11-23, IMG 3985)



Portion of rodent debris bagged for removal. (2009-11-23, IMG 3981)



Jeff Penuel secures timber “strong-backs” to chimney prior to “righting”. (2009-06-09, IMG 3558)



Jeff Penuel carefully adjusts the come-alongs : “strongbacks”, chains, winches, hydraulic jacks, laser level and...patience. (2009-12-02, IMG4005)



Cabin with straightened chimney. Note top right corner having moved ca. 8-10" from the released bracing to achieve level. Jeff intentionally incorporated the chimney wall in with his interior "strongbacks" for additional support, which allowed the structure to "right" itself, while still attached to the chimney. (2009-13-03, IMG4013)



Hearth being leveled. (2010-01-19, IMG 4066)



The “levitated” cabin, with foundation and subfloor removed! (2010-03-01, IMG 4252)

According to the protocol, archeologists Martin Dickinson and John Davidson of South Arc, Inc. coordinated with Jeff’s work on the foundation and subflooring . They screened all areas to the various depths of proposed impact: under the removed porch, under the interior cabin floor, at the locations of all the foundation piers and where dirt was removed from under the chimney. (South Arc, Inc. is an established archeological/historical firm out of Gainesville, Florida. The firm’s president and co-founder, Martin Dickinson also just happens to be Archie Carr’s godson and one of the last people to hunt out of the cabin in the 1970’s. It truly is a small world!). Martin and South Arc, Inc. have generously donated their services to the restoration effort.



John Davidson of South Arc, Inc. shovels cabin floor material for screening . (2010-02-24, IMG 4201)



Martin Dickinson shovels porch soil to John Davidson (holding recovered shotgun shell). (2010-02-24, IMG 4216)



Galvanized oar lock socket found in front of cabin, under porch area by South Arc, Inc. (2010-02-24, IMG Oar Lock socket 1) Parson Carr built his own rowboats for use at the cabin...he probably looked all over for this, one day 70+ years ago!



Martin Dickinson of South Arc, Inc. looks on after sealing the excavated porch area with landscape fabric to prevent future potential artifact contamination. (2010-02-25, IMG 4241)

With the archeological screening done and the foundation piers in place, Jeff finished the subflooring and re-set all of the “sound” original floor boards in the cabin. Phase I was complete...well, almost complete.....



New foundation, sub-floor and original floor boards (on right) ready to re-install. (2010-03-17, IMG Carr Cabin Floor re-install)



Re-installing “sound” original floorboards. (2010-03-17, IMG 4411)



Inspecting and trimming rotten material from sound original floorboards. (2010-03-17, IMG 4396)



Re-installed, original floorboards, set to hearth elevation. (2010-03-18, IMG 4417)



Herschel and Jeff discuss the fine points of old-school, homemade Florida "Cracker" mortar, using "live" vs. "dead" sand. (2010-03-25, IMG 4473)



Jeff shows Herschel his custom “aged” replacement floorboard to complete the floor due to the lack of enough sound original material. Proposed replacement is the un-nailed board on left...original floorboards are on the right. (2010-03-25, IMG 4459)



Floor is complete, new on the left, original on the right. (2010-06-23, IMG 4602)



Craftsman - Architect - Cabin (2010-03-25, IMG 4480)



Cabin "de-levitated", with leveled chimney and restored floor set back down on a new and substantial subfloor and foundation...all to protocol. (2010-06-23, IMG 4597)



Antique, salvaged heart pine "2-by" lumber donated by Leroy Cannon of Chiefland. (2010-07-09, IMG 4636)



Close-up of lumber showing grain and old circular saw cuts-marks. (2010-07-09, IMG 4638)



Tour group visiting cabin during restoration work. (2010-01-30, IMG Trout Lake Tour Pan)



(2011_02_22: Carr Cabin Interior purlins)

Jeff was able to save all the original, peeled pine rafters and uprights in the cabin. However, to do so, and still provide structural stability, he added rough cut pine interior diagonal bracing, as per Shepard's stabilization protocol. Also, due to decay of some of the bases of the peeled pine pole uprights, he "sistered" vertical rough cut timber to the weakened pole, as per protocol and discussion with Herschel Shepard.



(2011_02_22, IMG 4829) Interior bracing



(2011_02_22, IMG 4830) Additional bracing detail.



(2011_02_22, IMG 4835) Bracing detail showing diagonals, vertical “sisters” and replacement horizontal wall purlins(battens) to which cypress shingles are nailed.

Next came the painstaking inspection of every existing, original milled cypress siding shingle. Again, all that were structurally sound were left in place. Jeff had a mill in Williston, Florida custom mill matching cypress shingles to replace the rotten shingles and to fill the voids where they were completely missing. All work was by hand. Shingles were cut and shaped when necessary with a vintage roofer’s hatchet and then hand nailed in place.



(2011_02_22, IMG 4845) Above and below: Inspecting, selecting, shaping and placing cypress shingle siding.



(2011_02_22, IMG 4841)



(2011_02_22, IMG 4856) Care was taken at every step of the process by Jeff and each of his crew. This is evident while viewing Shane Campbell carefully weaving in a replacement shingle among the original siding.

Following the bracing of the interior of the cabin and replacement of decayed or missing milled cypress shingle siding, Jeff and his crew then carefully restored the window frames and wooden shutters and doors.



(2011_03_08, IMG 4917) Jeff restoring window frame on south wall.



(2011_03_08, IMG 4921) Restored window shutter, east wall.



(2011_03_08, IMG4924) North wall, completed.

Views of Completed...stabilized 1938 core cabin:



(2011_03_21, IMG Pan 1) Wide angle view from the NW, showing the north and west sides of cabin.



(2011_03_21, IMG 5086) West side (front/lakeside) of cabin.



(2011_03_21, IMG 5099) East (back) side of cabin.



(2011_03_21, IMG 5105) South side of cabin.



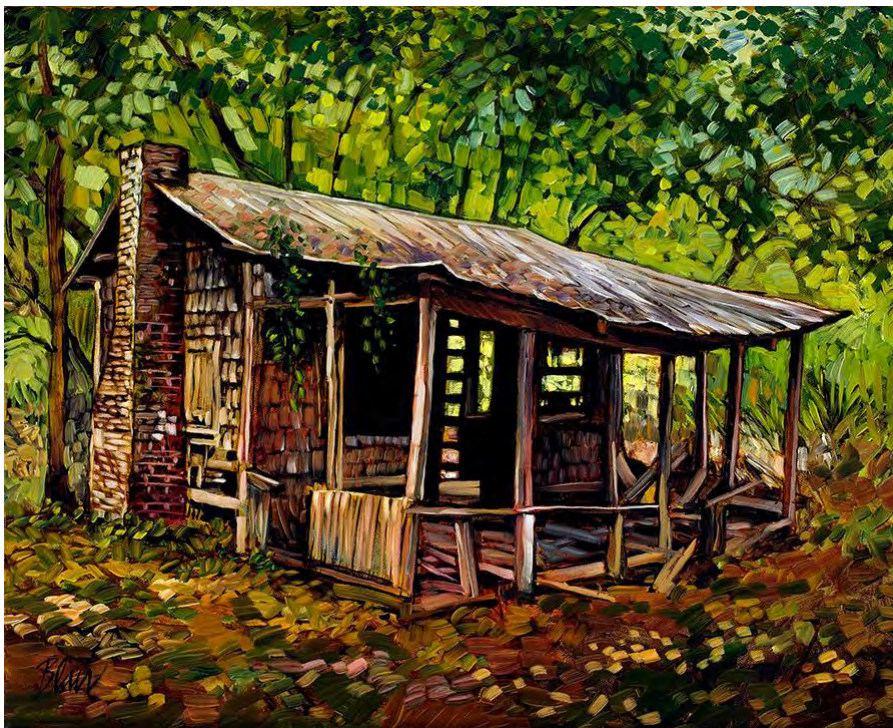
(2011_03_21, IMG 5104) North side of cabin.



(2011_12_18, IMG 4765) Bobby Ross and custom cut pine.



(2011_09_15), IMG5361) Concrete block porch piers laid and ready, 9-15-2011.



(CARR Cabin by E. Blair) Painting of cabin by Eleanor Blair before stabilization



Deteriorated and removed porch is rebuilt according to documentation and protocol. (2011-09-23, IMG 5377)



Jeff Penuel referring to architectural photos, plans and protocol. (2011-09-23, IMG 5393)



Close-up of Jeff studying photo documentation. 92011-09-23, IMG 5390)



Porch framing going up utilizing the few surviving, sound timbers. (2011-09-23, IMG 5415)



"Distressed" but sound tin fitted to porch roof. (2011-09-23, IMG 5463)



Porch ready for screening, (2011-09-23, IMG 5480)



Nearing completion. (2011-09-29, IMG Pan 1)



The last board. (2011-09-30, IMG 5529)



A craftsman's final critique. (2011-09-30, IMG 5535)



The final product. (2011-10-06, IMG 5547)



Welcome to the Carr family cabin. (2011-09-30, IMG 5522)



Hope ya'll enjoy it...Ray Willis, Jeff Penuel. (2011-09-29, IMG 5519)